

# Active Management

Reclaim and maintain  
control of your printer fleet



How can your company optimize its print strategy?  
Find out and banish costly chaos.

# Answer these questions with Active Management

## How many output devices in your organization?

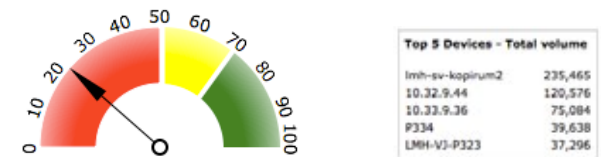
Get a clear overview of the real number of devices plugged into the network, with a breakdown per multi-functional or printer and monochrome or colour device.



Often, the true number of devices exceeds that registered in the books. Active Management helps you establish the actual situation and allows you to cut hidden costs.

## Are the right devices in the right places?

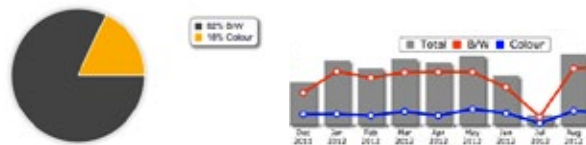
Are low-end devices over-used, and high-end MFPs under-used? Make savings by correcting inefficient use.



After analysing the volume and frequency of use for each and every device, Active Management suggests how to rearrange your set-up to improve efficiency.

## How many documents do you print?

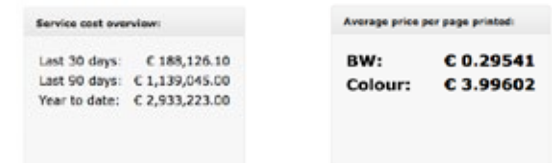
Reclaim control by knowing exactly how much output you generate, when and where.



Active Management helps you to create an accurate picture of your organization's patterns of print use.

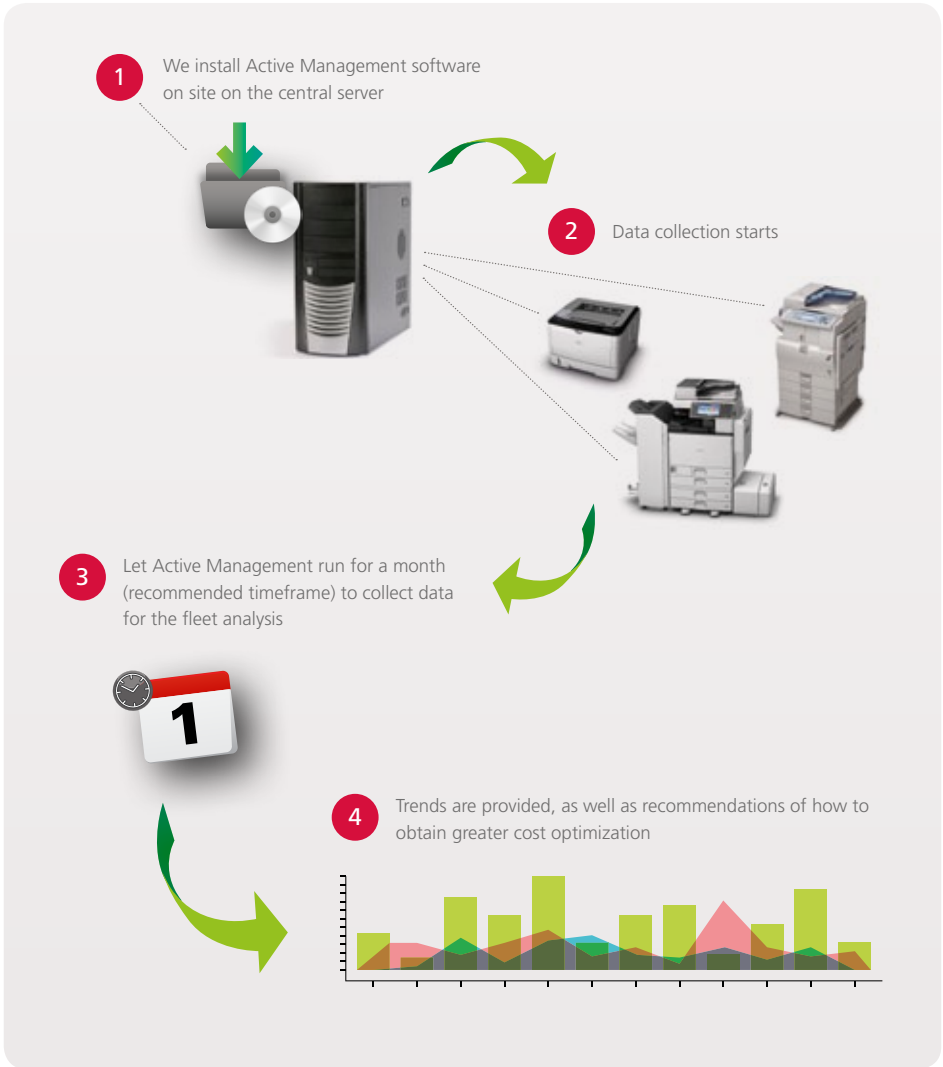
## What does printing and copying cost your organization?

Without Active Management, agreements with multiple vendors, devices of varying age, different contracts and other factors can make it hard to get an accurate picture.



By looking at all your vendor contracts and other contributing factors, Active Management allows you to estimate the average price of every page you print.

# How does it work?



For more information about how Active Management can help, contact your local Ricoh International distributor partner through [www.ricoh-international.com](http://www.ricoh-international.com)

---

## Active Management

Real-time visibility and total control, with minimum efforts

**RICOH**  
imagine. change.